

ACE Interface NEAR Science:
Understanding Self-Healing Communities
Presenter Training

Lunch & Learn

December 12, 2024

The bigger picture

80x3 is on a mission to create a **community of trauma-sensitive adults committed to ensuring resilient and healthy futures for all children.**



The ACE Interface provides a **starting point** that people can use to build a common language about how adversity and trauma impact our biology, along with the health and well-being of our communities.



Introductions in the chat

- Name
- Organization and role
- Why are you interested in becoming an ACE Interface Presenter?



What is the purpose of the ACE Interface Presenter Training?

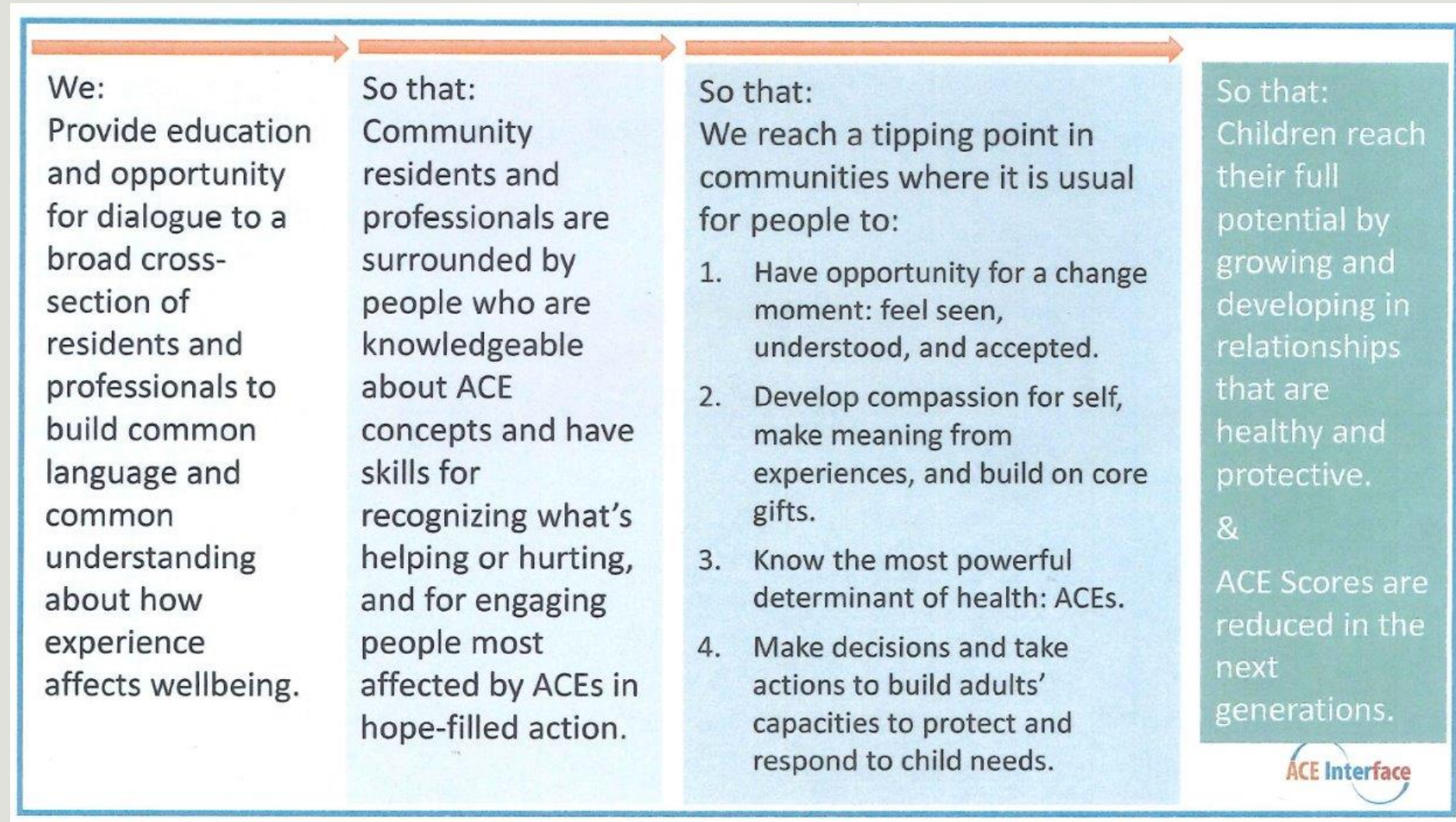
This training will provide up to 30 providers from the Early Childhood Education field to present the ACE Interface *Understanding NEAR Science (NEAR): Building Self-Healing Communities* presentation.

The ACE Interface Presentation is presented in three sections:

- 1. Neurobiology, Historical Trauma, & Epigenetics** – focuses on how our brains and our DNA expression can be influenced by our environment and highlights how toxic stress can impact healthy development.
- 2. Key Findings from the Adverse Childhood Experiences (ACE) study** – linking adversity to long-term health outcomes.
- 3. Resilience** – using research and community wisdom to rethink how we respond to ACEs and strengthen our communities. The presentation offers a message of hope and introduces a process that communities have used to build their capacity to: prevent Adverse Childhood Experiences (ACEs), support those who have experienced toxic stress, and build new cultural norms that are more inclusive, culturally-responsive, and healing-centered.

Attending the Presenter Training is the ***first step*** to becoming an ACE Interface presenter.

What is the ACE Interface Theory of Change



What is the ACE Interface Presenter Training Certification Process?

Once trained, participants become Presenter Candidates and receive **temporary permission** to present the ACE Interface curriculum (presentation slides and related resources), with the agreement that they will complete Presenter Certification within 9 months of the training.

Presenter Certification steps include;

- Co-presenting the *Understanding Adverse Childhood Experiences (ACEs): Building Self-Healing Communities* presentation with at least one other ACE Interface presenter in front of an “audience” (a group of at least 3 people) **at least 2 times**
 - Submitting **presentation paperwork** after each presentation (sign-in sheet, surveys, 1-page cover sheet)
 - Filling out a **self-reflection form** about your own presentation after your first two presentations
 - Getting feedback from your co-presenter** after your first two presentations (by asking them to fill out a peer feedback form on your behalf)
- Once ready, Presenter Candidates will sign-up for a 1-hour **Presenter Demonstration** with a FamilyWise staff person to demonstrate their comfort presenting the content

*Note: Presenter Candidates are expected to continue co-presenting with another ACE Interface Presenter **until they complete the Presenter Certification steps.***

What is the estimated time commitment to complete the certification process?

Attendees will be expected to designate approximately **35 – 70 hours** over the next year to becoming a Certified ACE Interface Presenter.

Once certified, Presenters are encouraged to continue learning and building comfort with the material and attending Community of Practice offerings as able, so they can enhance their ability to present the ACE Interface presentation.

In addition, Certified Presenters **are required** to continue submitting presentation paperwork.

ACE Interface Presenter CERTIFICATION PROCESS

How do I go from a candidate to a certified presenter?



Winter 2025 Presenter Training Dates

- **Training Day 1:** Thursday, February 13th from 9:00 a.m. – 4:00 p.m. (**in-person** at Washburn Center for Children in Minneapolis)
- **Training Day 2:** Friday, February 14th from 9:00 a.m. – 4:00 p.m. (**in-person** at Washburn Center for Children in Minneapolis)
- **Training Day 3:** (*Community of Practice*) Thursday, March 13th from 9:00 a.m. – 11:00 a.m. (**virtual** on Zoom)

Participants are expected to attend **all three dates of this training if they plan to participate.*

Who should apply?

*Application closes on **Friday, 12/20**

People who:

- Can commit to **attending the full Presenter Training**, plan to designate time to get to know the ACE Interface material, and who will complete the Presenter Certification steps within 9 months of training
- Agree to present the ACE Interface presentation **with Early Childhood Education audiences over the next 2-3 years**
- Demonstrate self-awareness, social awareness, and **emotional management skills**
- Have an ability and willingness to teach adults
- Demonstrate an ability to **effectively communicate with diverse** communities, audiences, and sectors
- Are committed to **continually improving their effectiveness** as presenters through practice and reflection, and engaging in ongoing learning by joining the ACE Interface Community of Practice

Note: Approximately 50% of the training spaces will be prioritized for Develop-Approved Trainers

Attend an upcoming *Understanding NEAR* Presentation

In-Person Understanding NEAR Science Presentation at the MnAEYC Winter Leadership Institute:

- Presentation: Thursday, January 30th, 2025 from 8:30 – 10:30 a.m.
- The Leadership Institute: 8:00-4:30 on January 30, 2025 at the Science Museum
- We are pleased to announce scholarships for the MnAEYC Winter Leadership will be available to individuals who are selected for the Training of Presenters (TOP) program. *There will be limited spots for this opportunity.*

Virtual Understanding NEAR Science Presentation: Thursday, January 30th, 2025 from 9:00 – 11:00 a.m.

- Register here: <https://us06web.zoom.us/meeting/register/tZcq-d-qopzwtHt0TCqy2H4lO84V5N-2-Pq87>
- This is a general presentation – not specifically focused on early childhood educators, but will give you a good sense of the material

Presenter Training Frequently Asked Questions (FAQs) - *Application Process*

What is the application process?

- You are encouraged to apply for the training via the Training website by Friday, 12/20/2024

Are there limited spots for the training?

- Yes, we anticipate that we will have more applicants than spots for this training.

What is the cost of attending the training?

- If selected, there is no cost for attending the training

Who is sponsoring the training?

- We would like to extend our heartfelt thanks to [80×3 at Greater Twin Cities United Way](#) for providing this incredible opportunity at no cost to participants. Their investment in us is a crucial step towards achieving the systems change needed to create a trauma-informed and anti-racist region in Minnesota.

Do I need to have attended an *Understanding NEAR* presentation to apply for the Training?

- You are STRONGLY encouraged to attend an Understanding NEAR presentation before attending the Training. This Training is a significant time and resource investment – for sponsors, FamilyWise trainers, and attendees, so we want to ensure that people attending the Training know what they are signing up for.

Presenter Training Frequently Asked Questions (FAQs) - *After Training*

Once trained, can I charge for presentations?

- Presenters will need to complete Presenter Certification before they are able to charge their going rate for presentations.
- Once certified, we encourage presenters to co-present this information whenever possible.
- Note: to incentivize people to complete Presenter Certification, 80X3 will offer some access dollars to presenters as they Present this content and work through certification. We are still working out the specifics of what these dollars will entail (such as how much/presentation, how presenters will be able to access them, etc.).

Will I be able to offer Develop CEUs for this presentation?

- Presenters will not be able to offer Develop CEUs **until they are certified and approved as authorized trainers** by FamilyWise.

What supports will be available after I attend the training?

- Presenter Refreshers
- Regular Community of Practice Sessions
- Newsletters
- And much more!

Will I be required to co-present after I complete Presenter Certification?

- Although you will not be required to co-facilitate Understanding NEAR presentations after completing Presenter Training, we will strongly encourage you to continue co-presenting even after Certification.

Presenter Training Frequently Asked Questions (FAQs)

If I can't attend or am not selected for the Winter Training, will there be other opportunities for me to attend a Presenter Training in the future?

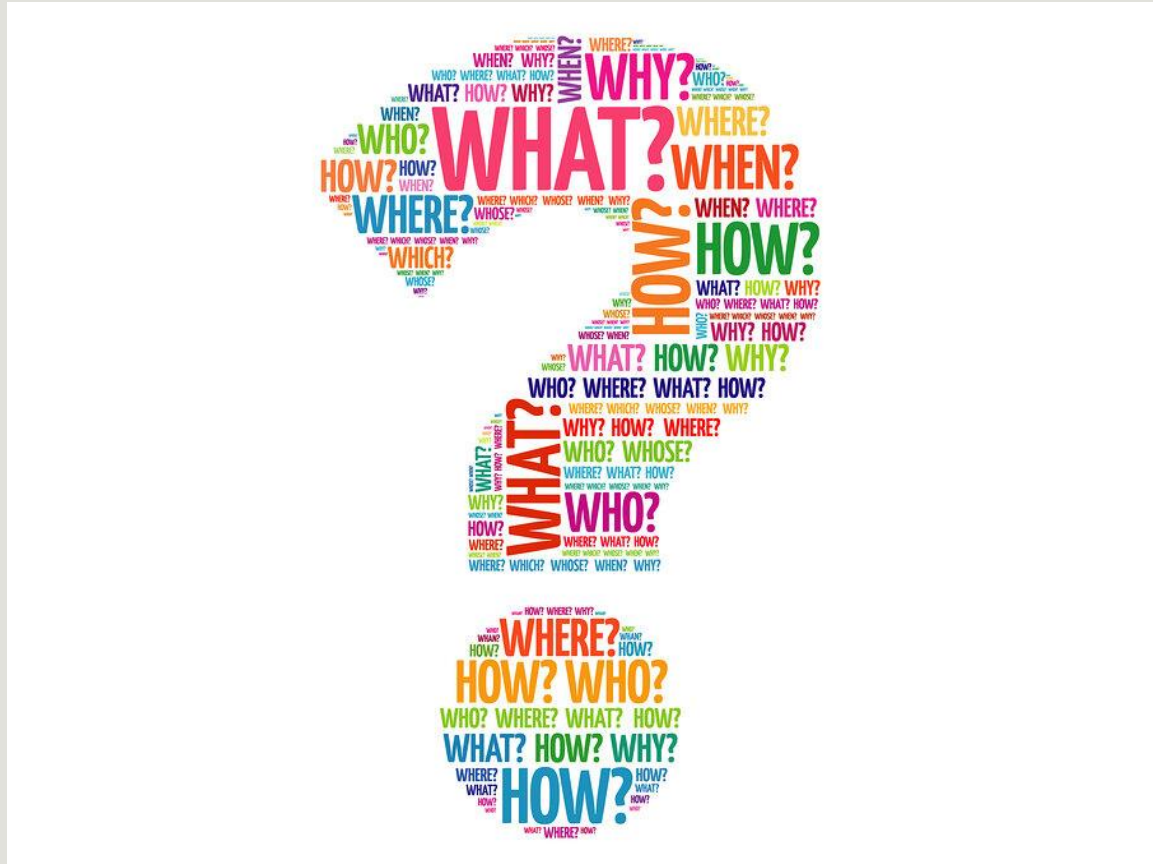
- Yes, FamilyWise offers 2 Presenter Trainings per year (April / November). These trainings are sponsored through More Resilient Minnesota and are not specific to the early childhood field. All applicants who are not selected for the Winter Training will receive information about how to apply for one of these trainings in the future.

Are the ACE Interface materials available in other languages than English?

- We are currently working with the curriculum developers to create Spanish materials and expect that they will be completed and available to the Presenter Network by spring 2025

Who are the curriculum developers?

- Dr. Rob Anda (co-principal investigator of the original ACE Study), and Laura Porter



Questions?



Survey

L & L SURVEY

[HTTPS://WWW.SURVEYMONKEY.COM/R/
XPBDD8N](https://www.surveymonkey.com/r/XPBDD8N)